

CERTIFIED LAND CORNER RECORDATION

DESCRIPTION OF CORNER EVIDENCE FOUND, AND ORIGINAL RECORD (If known)

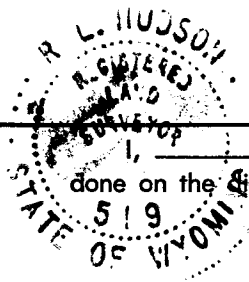
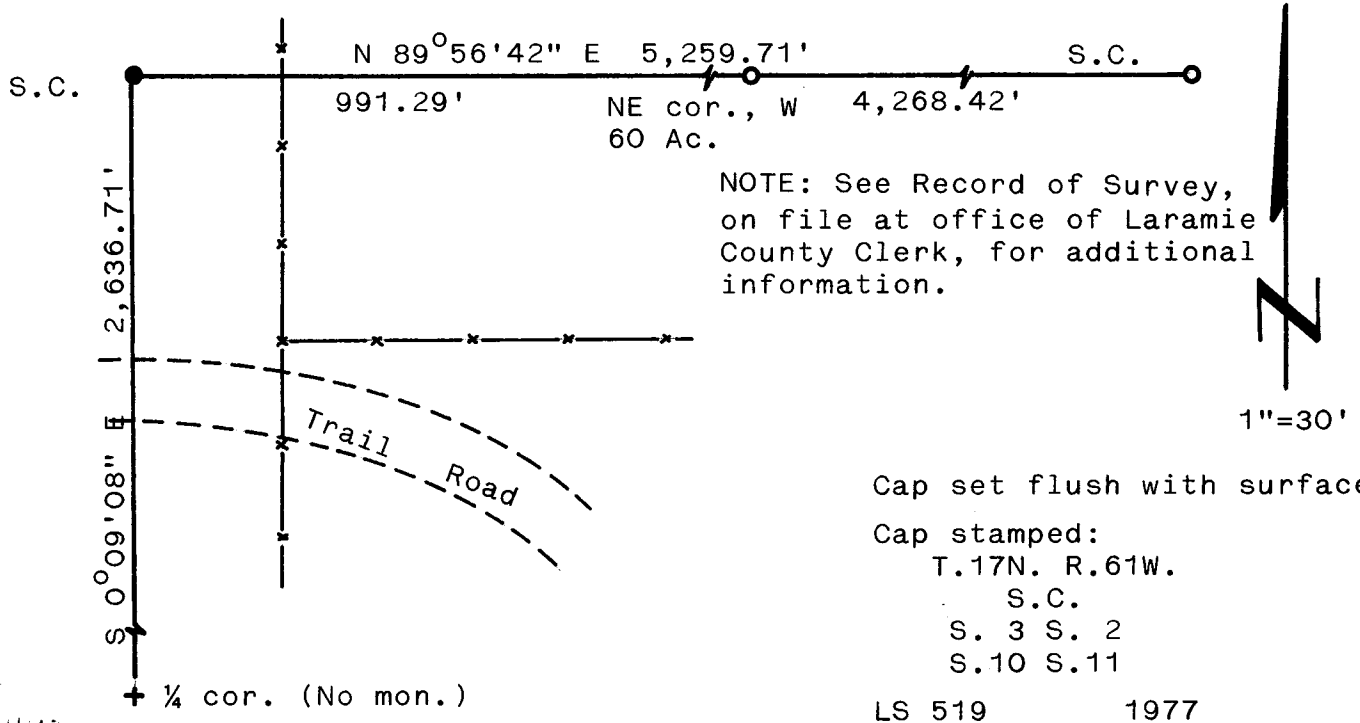
| | |
|--|--|
| LOCATION S.3 S.2 S.10 S.11 T.17N., R.61W. 6th P.M. | Found 28" x 26" x 3" chalk stone with 3 grooves visible on south face and 1 groove visible on east face, tipped but apparently in place. (Stone in fair condition) G.L.O. record - Limestone 36 x 30 x 3 set 14 in deep marked with 5 notches on S side and 2 notches on E side . . . Contract survey by Chas. A. Caton in 1873. |
|--|--|

DESCRIPTION OF MONUMENT AND ACCESSORIES ESTABLISHED TO PERPETUATE THE ORIGINAL LOCATION OF THIS CORNER:

At the corner: Set a 5/8" dia. x 24" long rebar with 2" dia. aluminum cap.

Accessories: Replanted stone, as memorial, one foot east of corner monument. (Freshened visible grooves only)

SKETCH, WITH COURSE AND DISTANCE TO ADJACENT CORNER IF DETERMINED IN THIS SURVEY.
(May Sketch or Paste Reproduction on Reverse Side.)



I, R. L. Hudson certify that I have carefully performed ~~or reviewed~~ the work done on the diagrammed corner as reported on this recordation form and approve the same.

R. L. Hudson Wyoming L.S. No. 519
Signature of Surveyor Registration No.

STATE OF WYOMING,
Office of Clerk and Recorder,
County of Laramie

This "corner record" was filed for record on the 21 day of December, 1977, was noted on the cross-index plat and is assigned page No. _____, in book No. _____.

Janet Whitehead
County Official

| | | | |
|-----------------|-------------|-----------|-----------|
| Cross Index No. | T. _____ | R. _____ | Mer. |
| | <u>E-17</u> | <u>17</u> | <u>61</u> |
| | _____ | _____ | Mer. |
| | _____ | _____ | Mer. |
| | _____ | _____ | Mer. |
| | _____ | _____ | Mer. |
| | _____ | _____ | Mer. |
| | _____ | _____ | Mer. |